



Construction & Skilled Trades Solutions

PRODUCT GUIDE



YOU KNOW THE WD-40® BRAND NAME...

BUT DO YOU KNOW ALL IT CAN DO FOR YOUR DAILY NEEDS?



Our time-tested formulas have been solving problems across a variety of industries for more than 65 years.

From building residentials to commercials to maintaining your tools and assets, pros can count on WD-40® Brand products to keep the jobsite moving with versatile delivery systems that offer a unique combination of safe, powerful and specialized formulas designed to increase efficiency, reduce downtime and minimize risk—everything you need to get the job done right.



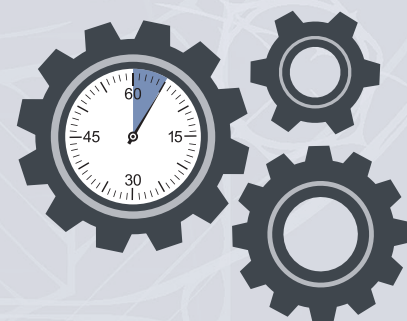
PROVEN AND EFFECTIVE FORMULAS FOR TOUGH ENVIRONMENTS

Lab testing shows that WD-40® Brand products outperform other brands in critical performance tests for dependability and value you can count on.



REDUCE DOWNTIME AND PROTECT YOUR EQUIPMENT, TOOLS & ASSETS

WD-40® Brand products help protect assets to promote longer equipment life, prevent unscheduled downtime due to unexpected equipment failure, and help avoid accidents and injuries caused by poorly maintained equipment.

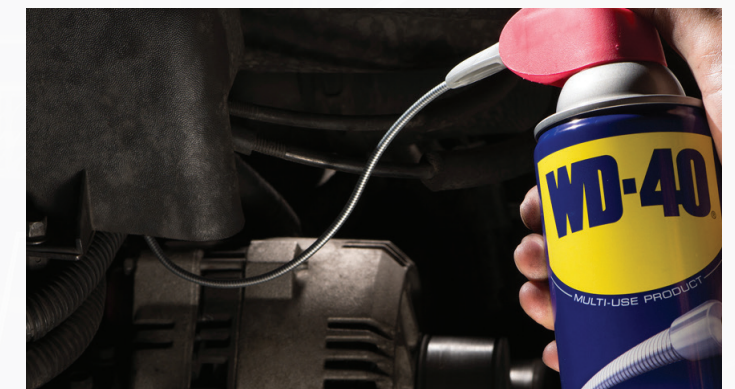


SAFETY AND COMPLIANCE ARE OUR TOP PRIORITIES

WD-40® Brand products are formulated with clean solvents and oils that have been treated to remove harmful (chemical) contaminants. Our products do not require warnings against significant exposure to chemicals that cause cancer, birth defects, or other reproductive harm*.




* WD-40® Brand products do not require California cancer warnings (Prop 65).



INDUSTRY-LEADING, INNOVATIVE SOLUTIONS MAKE YOUR JOB EASIER

WD-40® Brand has been a trusted name in maintenance products for more than 65 years. We strive to continuously improve and innovate with products designed to tackle any challenge.





“Found this product by WD-40
[Company] is absolutely perfect and the
best out of any other product on the
market that we have tried!”

LUBRICANTS & PENETRANTS

We offer an assortment of fast-acting lubricants that are proven to withstand the high-performance environments in which you work. They'll keep parts moving smoothly, unstick stuck parts quickly and deliver long-lasting performance to keep operations running.



Silicone

White Lithium Grease

Dry Lube

Gel Lube

Roller Chain Lube

Penetrant

WD-40 Specialist® Brand products are represented using new can design and will vary in availability as we work through a rolling change.



SPECIALIST.

SILICONE

It lubricates. It resists water. It protects surfaces from residue. What's even better? It dries without leaving stickiness for you to clean.

FEATURES

- Lubricates, resists water and protects metal and non-metal surfaces
- Dries with no stickiness or messy residue
- Safe to use on non-metal surfaces such as plastic and rubber parts
- NSF Nonfood Compounds Program Listed H2 #146863
- Working temperature range—
-100°F to 500°F

APPLICATIONS

Lubricating table saw, fork lift, nuts, bolts, pins, screws, bushings, cables, pulleys, sliding mechanisms, valves, linkages, hinges, locks

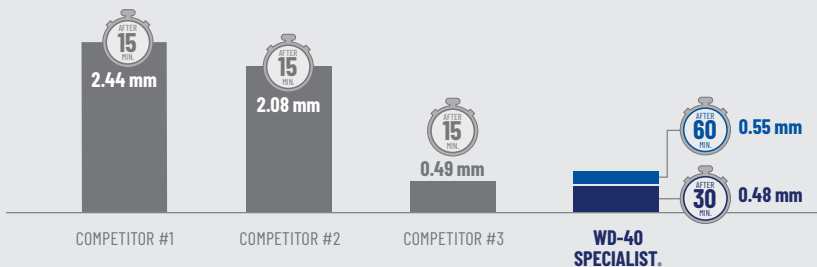


Lubricates at least 2x longer than the competition for less frequent applications.



4 BALL WEAR TEST

Modified (Longevity)



Results show width of scar at specified times. Lower number means less scarring and better protection for longer periods of time.

Test Lab: WD-40 Co. Technical Center (Pine Brook, NJ); ASTM D4172 - Modified; Test date: 03/2021.



ITEM #: 30001

NET WEIGHT: 11 OZ.

CASE ORDER #: 300012

CASE UNITS: 6/CASE



SPECIALIST.

WHITE LITHIUM GREASE

Have a job that requires heavy-duty lubrication? WD-40 Specialist® White Lithium Grease sprays on evenly as a liquid and sets dry for a thick, protective coating that won't run off, making it a perfect match for metal-to-metal applications.

FEATURES

- Long-lasting lubrication and protection
- Leaves a rust-inhibiting barrier
- Won't freeze, melt or run off
- NSF Nonfood Compounds Program Listed H2 #146864
- Working temperature range—0°F to 300°F

APPLICATIONS

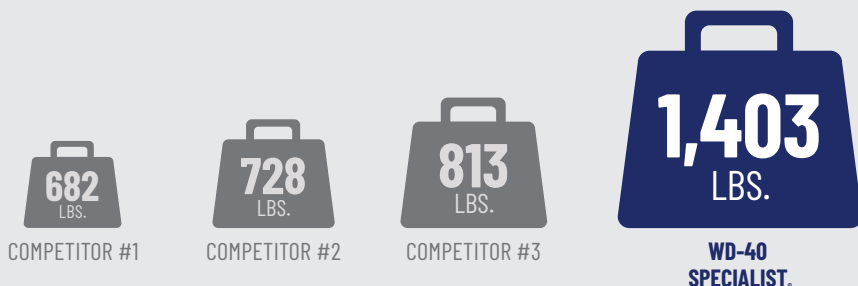
Hinges, chains, linkages, latches, overhead door tracks, pulleys, cables and guide rails, tow bars, dock doors and outdoor rails



Withstands 1.5x more pressure than the competition for less frequent reapplication and reduced downtime.



EXTREME PRESSURE TEST



Test measures the load carrying properties of a lubricant.

Test Lab: WD-40 Co. Technical Center (Pine Brook, NJ); ASTM D3233A; Test date: 12/2020.

| | | | |
|---------------|--------------------|----------------------|--------------------|
| ITEM #: 30061 | NET WEIGHT: 10 OZ. | CASE ORDER #: 300615 | CASE UNITS: 6/CASE |
|---------------|--------------------|----------------------|--------------------|





SPECIALIST.

DRY LUBE

Not even the highest temperatures pose a problem with WD-40 Specialist® Dry Lube. Our spray, which is safe on multiple surfaces, reduces friction while providing long-lasting lubrication and corrosion protection. It dries quickly, leaves no oily residue, and resists dirt, dust and oil.

FEATURES

- PTFE formula reduces friction and wear, and enhances performance
- Resists dust, oil and dirt accumulation
- NSF Nonfood Compounds Program Listed H2 #146856
- Working temperature range—
-50°F to 500°F

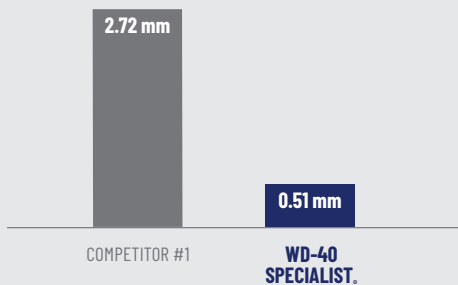
APPLICATIONS

Great for use on tools, impact guns, wrenches, tool chest, drawer sliders, power tools, blades, hinges and other equipment

Provides 5x greater wear protection and lubricates at least 4x longer than the competition for reduced application frequency.



4 BALL WEAR TEST

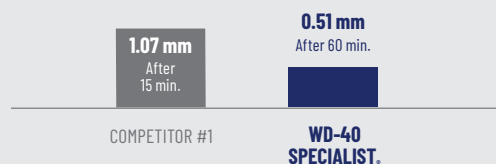


Results show width of scar after 60 minutes at 12,000 RPM.

Test Lab: WD-40 Co. Technical Center (Pine Brook, NJ); ASTM D4172;
Test date: 12/2020.

4 BALL WEAR TEST

Modified (Longevity)



Results show width of scar at specified times.

Lower number means less scarring and better protection.

Test Lab: WD-40 Co. Technical Center (Pine Brook, NJ); ASTM D4172 –
Modified; Test date: 04/2021.



ITEM #: 30005

NET WEIGHT: 10 OZ.

CASE ORDER #: 300059

CASE UNITS: 6/CASE



SPECIALIST.

GEL LUBE

Our unique gel lubricant sprays on thick and won't run, drip or make a mess. The no-drip formula is powerful enough to provide **12x longer-lasting lubrication*** and it also prevents rust and corrosion for up to one year**—creating a more productive and efficient workplace.

FEATURES

- Thick, no drip, no mess, non-fling
- Stays where you spray it; perfect for vertical surfaces
- Self-healing characteristics
- Safe on metals, plastics and rubber
- Working temperature range—
-100°F to 500°F
- No-drip formula

APPLICATIONS

Moving parts, vertical surfaces, chains, cables, gears, exhaust manifold, CV joints, bushings, bearings, lift gates, garage doors



Lubricates 15x longer than the competition.



LONG-LASTING LUBRICATION TEST



Test measures length of lubrication under pounds of force before breakdown.

Test Lab: Petro-Lubricant Laboratories Inc. (Lafayette, NJ); ASTM D5620A; Test date: 04/2020.

| | | | |
|---------------|--------------------|----------------------|--------------------|
| ITEM #: 30010 | NET WEIGHT: 10 OZ. | CASE ORDER #: 300103 | CASE UNITS: 6/CASE |
|---------------|--------------------|----------------------|--------------------|

* Compared to WD-40® Multi-Use Product using independent lab test ASTM D5620.

** Independent lab tests conducted in humidity chamber. Results vary depending on extreme conditions.





SPECIALIST.

ROLLER CHAIN LUBE

Thickens, repels dirt, stays put—Advanced Ceramic Reinforced lubricant sprays on thin to penetrate deep into the chain and protects it from breaking prematurely. It then thickens to provide proven, long-lasting lubrication.

FEATURES

- Protects chains from premature breakage*
- Repels dirt, displaces contaminants and traps moisture
- Non-fling at high RPM
- Provides long-lasting lubrication
- Working temperature range—
-40°F to 400°F

APPLICATIONS

Chains, sprockets, chain links,
O-ring chains, lubricates the drive
chains on a planter



Penetrates inner chain links, O-rings, pins and bushings, and stays in place to protect.



1. Penetrates into chain inner links, pins, bushings and rollers

2. Displaces contaminants and trapped moisture

3. Dries quickly inside links (non-fling)

4. Provides long-lasting lubrication on chain and sprockets

5. Protects chains and sprockets against rust and premature breakage

Penetrates and lubricates internal chain mechanisms.

Safe on O-Ring chains



ITEM #: 30049

NET WEIGHT: 10 OZ.

CASE ORDER #: 300493

CASE UNITS: 6/CASE

* Based on proper chain maintenance extending the life of the chain. Proper maintenance for roller chain is cleaning and lubricating external parts (chains and sprockets), and also the internal parts (chain links).



PENETRANT AND PENETRANT WITH EZ-REACH®

Penetrates up to 2x faster than competitors, which means less downtime and faster return to service.

Provides 10x longer surface rust protection than the competition for extended equipment life and reduced reapplications.

Innovative and proven effective, this rust-busting formula gets into tight crevices, threads, locks, chains and seams to break bonds that hold stuck parts together. To make your job easier, we took it a step further by attaching an eight-inch flexible straw that bends, keeps its shape and sprays two ways, giving you easier access to hard-to-reach spaces.

FEATURES

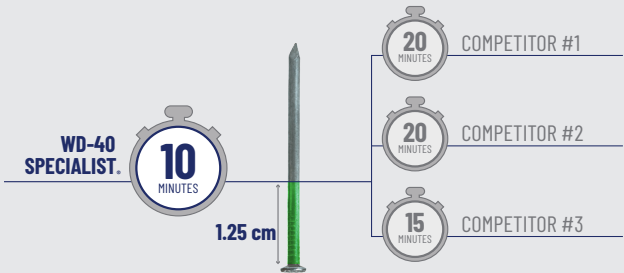
- Proprietary penetrating formula releases tough rusted parts with minimal effort
- Fast-acting formula penetrates deep into crevices, threads and seams
- Prevents rust and corrosion from re-forming
- Safe on metals, plastics and rubber
- Displaces water better than competitive brands
- Working temperature range—0°F to 400°F

APPLICATIONS

Rusted metal threads, nuts, bolts, pins, screws, bushings, cables, pulleys, sliding mechanisms, valves, linkages, hinges, locks, chains

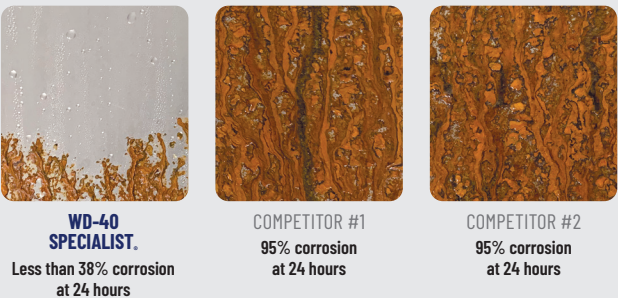


NAIL CLIMB TEST



Test measures the penetrating ability of a fluid. The less time to penetrate, the better.
Test Lab: Fred Cuneo (3rd Party); Nail Climb Test; Test date: 03/2021.

SALT SPRAY CORROSION PROTECTION TEST



This test is used to measure the level of corrosion protection provided by a test fluid.
Test Lab: WD-40 Co. Technical Center (Pine Brook, NJ); ASTM B117; Test date: 02/2021.

PENETRANT

| | |
|----------------------|--------------------|
| ITEM #: 30000 | NET WEIGHT: 11 OZ. |
| CASE ORDER #: 300004 | CASE UNITS: 6/CASE |

PENETRANT WITH EZ-REACH®

| | |
|----------------------|----------------------|
| ITEM #: 30048 | NET WEIGHT: 13.5 OZ. |
| CASE ORDER #: 300486 | CASE UNITS: 6/CASE |



DID YOU KNOW?

WD-40® Brand products are formulated with clean solvents and oils that have been treated to remove harmful (chemical) contaminants.

“Exactly what you need to degrease those hard-to-reach spots. Eats the grease, and wipes away clean. Excellent, excellent product.”

CLEANERS & DEGREASERS

Engineered to be powerful yet safe, our industrial-strength cleaners and degreasers keep your facilities and equipment running smoother, lasting longer and looking like new.



SPECIALIST

Contact Cleaner

Machine & Engine Degreaser

Carb/Throttle Body Cleaner

Degreaser (Aerosol)

**Cleaner & Degreaser
(Non-Aerosol)**

WD-40 Specialist® Brand products are represented using new can design and will vary in availability as we work through a rolling change.



SPECIALIST.

CONTACT CLEANER

With this cleaner, oil, dirt, flux residue and condensation from sensitive electronics and electrical equipment are blasted away with pin-point precision. Our industry-leading Smart Straw® technology makes application accurate. The spray dries quickly, leaving no residue, and removes a wide range of contaminants, making it a top choice among automotive professionals.

FEATURES

- Kb cleaning score of 250 vs. mineral spirits (Kb 25)
- Quick-drying with no residue
- Dielectric Strength >20,000 volts
- Safe on most plastics¹, rubber and metal
- NSF Nonfood Compounds Program Listed K2 #146857

¹ Test on plastic before using, and avoid adhesives, device screens and keyboards. Always check with the device manufacturer before performing maintenance.

APPLICATIONS

Circuit boards, controls, switches, precision instruments, electric panels, generators, electric motors, armatures, battery terminals, electrical connectors, machine circuit boards



Removes over 95% of common surface contaminants for optimal performance.



REMOVES A WIDE VARIETY OF CONTAMINANTS

FLUX
PASTE

SILICONE
GREASE

USED
MOTOR
OIL

TOOL
LUBRICANT

HYDRAULIC
OIL

Always check with the manufacturer before performing maintenance on devices. Test Lab: Sterling Laboratories (Toledo, OH); ASTM D4488; Test date: 08/2018.



ITEM #: 30055

NET WEIGHT: 11 OZ.

CASE ORDER #: 300554

CASE UNITS: 6/CASE



SPECIALIST.

MACHINE & ENGINE DEGREASER



Our water-based aerosol formula provides deep, foaming, penetrating action and a powerful stream that sprays up to five feet to quickly and easily remove grease, oil, dirt and grime without the time and trouble of disassembly.

FEATURES

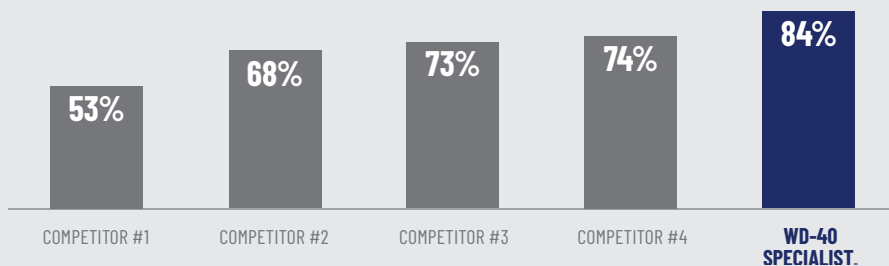
- Low odor, water-based formula
- Deep penetrating foaming action gets into cracks and crevices
- Quickly removes grease, oil, dirt and grime
- No rinsing required; low residue for a clean finish
- NSF Nonfood Compounds Program Listed C1 #146737

APPLICATIONS

Engines, gears and chains, power equipment, metal tools, engine bay, power tools and machinery

Removes automotive and industrial particulate soil faster than the competition.

EXTREME CLEANING SCORE



Test evaluates the cleaning ability of a fluid using a mechanical device. Score shows percent of soil removed.

Test Lab: Sterling Laboratories (Toledo, OH); ASTM D4488-A3; Test date: 05/2020. ASTM D4488-A3 Soil consists of a mixture (by weight) of vegetable oil, mineral oil, base oil, jet turbine oil, metallic brown oxides, naphthenic hydrocarbon solvent.

| | | | |
|---------------|--------------------|----------------------|--------------------|
| ITEM #: 30007 | NET WEIGHT: 18 OZ. | CASE ORDER #: 300070 | CASE UNITS: 4/CASE |
|---------------|--------------------|----------------------|--------------------|





SPECIALIST.

CARB/THROTTLE BODY CLEANER



It's the only all-in-one spray you need to clean your carburetor, throttle body and unpainted metal parts. It is a powerful solvent-based cleaner that blasts away tough carbon deposits, oil and grime with a unique dual-action cleaning system that breaks it up and doesn't leave behind residue.

FEATURES

- Powerful formula breaks up and blasts away tough deposits
- Proven to improve performance at high RPMs
- Reduced splash-back and overspray
- Safe on oxygen sensors or catalytic converters upon incidental contact

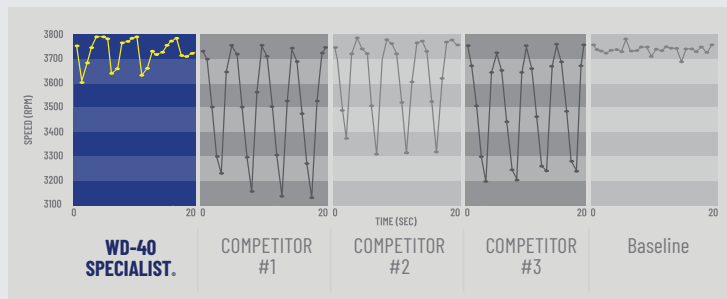
APPLICATIONS

Carburetors, throttle body, gas-powered equipment, fleet maintenance, non-painted metal parts, heavy-duty fleet maintenance

Powerful formula quickly breaks up and blasts away tough deposits for superior performance at high RPM.



STALLING EFFECTS AT HIGH SPEED



Results show average RPM after products are applied and recorded for standard deviation from the average. Closer to baseline and smaller standard deviation is better as these imply minimal stalling effects.

Test Lab: Intertek Carnot Emission Services (San Antonio, TX); Stalling Effects at High Speed; Test date: 05/2012.



- Powerful Formula Blasts Away Tough Deposits
- Dual-Action Cleaning

ITEM #: 30013

NET WEIGHT: 13.5 OZ.

CASE ORDER #: 300134

CASE UNITS: 6/CASE



SPECIALIST.

DEGREASER



A powerful solvent-based degreaser that quickly cleans machinery, engines and equipment to run smooth and look like new. Our fast-acting formula contains **PowerSolve Technology**—a proprietary solvent that quickly breaks down grease, as well as oil, dirt, tar, adhesives and more.

FEATURES

- Contains fast-acting **PowerSolve Technology**®
- Safe on metals, plastics, rubber and glass
- High liquid flashpoint of 202°F
- No residue
- Low fumes
- NSF Nonfood Compounds Program Listed K1 #150956

APPLICATIONS

Automotive and truck engines, tire rims, gears and chains, farm equipment/machinery, power equipment, other metal tools

Industrial-strength formula quickly removes tough dirt, grease and grime. Safe on plastics, rubbers, glass, metals and more.



SAFE FOR USE ON:

METALS

| |
|--------------------------------|
| Aluminum |
| Chrome |
| Copper-C110 Alloy (Unpolished) |
| Galvanized Steel |
| Magnesium |
| Steel (Cold Roll, Unpolished) |
| Titanium (Unpolished) |
| Zinc |

PLASTICS / RUBBERS / NON-METALS

| |
|------------------------|
| Acetal |
| Carbon Fiber |
| Copolymer |
| Neoprene (Hard Rubber) |



Test Lab: UL (Canton, MA); Surface Compatibility (Deleterious Effects to Hard Surfaces); Test date: 06/2014.



- Fast Acting
- Multi-Surface
- No Residue

ITEM #: 30028

NET WEIGHT: 15 OZ.

CASE ORDER #: 300280

CASE UNITS: 6/CASE



SPECIALIST.

CLEANER & DEGREASER

Engineered and proven to be more powerful and safer than other degreasers on the market, WD-40 Specialist® Cleaner & Degreaser is formulated with a unique bio-solvent that quickly breaks through tough grease and grime, protects against flash rust and is safe for use on sensitive surfaces—meeting the EPA's Safer Choice Certification criteria for safety and efficacy.

FEATURES

- Formulated with a biodegradable solvent
- Safe for food-processing facilities
- Contains anti-corrosion additives to prevent flash rust
- Non-flammable, non-corrosive and non-abrasive
- Low odor/fragrance-free
- NSF Nonfood Compounds Program Listed A1, A2, A4, A8, B1 #153187

APPLICATIONS

Parts, tools, floors, industrial machinery, commercial appliances and equipment, power washers, ultrasonic tool cleaners



EPA/Safer Choice recognition does not constitute endorsement of this product. The Safer Choice label signifies that the product's formula, as WD-40 Company has represented it to the EPA, contains ingredients with more positive human health and environmental characteristics than conventional products of the same type. EPA/Safer Choice relies solely on WD-40 Company, its integrity and good faith, for information on the product's composition, ingredients and attributes. EPA/Safer Choice has not independently identified, that is, via chemical analysis, the ingredients in the product formula, nor evaluated any of WD-40 Company non-ingredient claims. EPA/Safer Choice provides its evaluation only as to the product's human health and environmental characteristics, as specified in the Safer Choice Standard and based on currently available information and scientific understanding.

Outperforms competitors in surface compatibility tests on sensitive surfaces such as aluminum and glass.

CLEANER & DEGREASER (32 OZ.)

| | |
|---------------|--------------------|
| ITEM #: 30035 | NET WEIGHT: 32 OZ. |
|---------------|--------------------|

| | |
|----------------------|--------------------|
| CASE ORDER #: 300356 | CASE UNITS: 6/CASE |
|----------------------|--------------------|

CLEANER & DEGREASER GALLON

| | |
|---------------|--------------------|
| ITEM #: 30036 | NET WEIGHT: 1 GAL. |
|---------------|--------------------|

| | |
|----------------------|--------------------|
| CASE ORDER #: 300363 | CASE UNITS: 4/CASE |
|----------------------|--------------------|

Test Lab: WD-40 Co. Technical Center (Pine Brook, NJ); Surface Compatibility (Deleterious Effects to Hard Surfaces); Test date: 02/2020.



“For anyone who hasn’t used this, it is superb for stopping rust on items in high humidity or wet locations. Protects long after many (most) oils have failed.”

RUST MANAGEMENT

Preventing and removing rust is an important part of facility and equipment maintenance, repair and operations. Whether you are looking to prevent or remove rust, we have a product for the job.



SPECIALIST

Rust Remover Soak

Corrosion Inhibitor

WD-40 Specialist® Brand products are represented using new can design and will vary in availability as we work through a rolling change.



SPECIALIST.

RUST REMOVER SOAK

WD-40 Specialist® Rust Remover Soak safely and effectively removes rust without acids or caustic chemicals. This formula is non-toxic, contains no VOCs and works without harming surrounding surfaces. It restores even intricate, hard-to-reach surfaces to clean, bare metal that is ready to paint, and brightens copper, brass and similar alloys.

FEATURES

- Removes rust and other corrosion, but safe for surrounding areas
- No need for scraping, chipping or scrubbing
- Non-toxic fumes and acid-free
- NSF Nonfood Compounds Program Listed P1 #146753
- Formulated to be non-irritating to skin

APPLICATIONS

Tools, metal, cast iron, chrome parts, copper, brass and other alloys, automotive parts, fasteners

Fast-acting formula removes rust and restores surfaces to bare metal without caustic chemicals or harsh acids with minimal downtime.



SOAK TEST

6-Hour
Salt Exposure



WD-40
SPECIALIST.

4-Hour
Rust Remover
Soak Treatment



Test Lab: WD-40 Co. Technical Center (Pine Brook, NJ); Soak Test; Test date: 09/2020.

ITEM #: 30004

NET WEIGHT: 1 GAL.

CASE ORDER #: 300042

CASE UNITS: 4/CASE



SPECIALIST.

CORROSION INHIBITOR

Get ahead of the problem with this long-lasting corrosion inhibitor that protects metal parts by blocking rust and corrosion for up to 1 year outdoors or 2 years indoors. Ideal for preventive maintenance applications in challenging environments such as high humidity and long-term storage. The non-drying formula continues to work even if some of the coating gets rubbed off, re-sealing the vulnerable surface.

FEATURES

- Vapor Corrosion Inhibitors seal and protect to block corrosion
- Works indoors and outdoors
- Protects metals up to two years
- NSF Nonfood Compounds Program Listed A7 #146726

APPLICATIONS

Machined surfaces, equipment and metal parts subjected to extended storage periods, tools, chains, cables



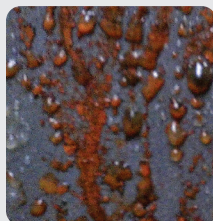
Only 5% rust after 1,200 hours of exposure to salt spray, meaning less frequent reapplication for time- and cost-savings, and longer protection of valuable assets.



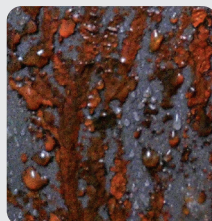
CORROSION PROTECTION



**WD-40
SPECIALIST.**
2,000 HRS.



COMPETITOR #1
24 HRS.



COMPETITOR #1
48 HRS.

This test is used to measure the level of corrosion protection of a test fluid under extreme conditions.

Test Lab: Petro-Lubricant Laboratories Inc. (Lafayette, NJ); ASTM B117; Test date: 05/2020.

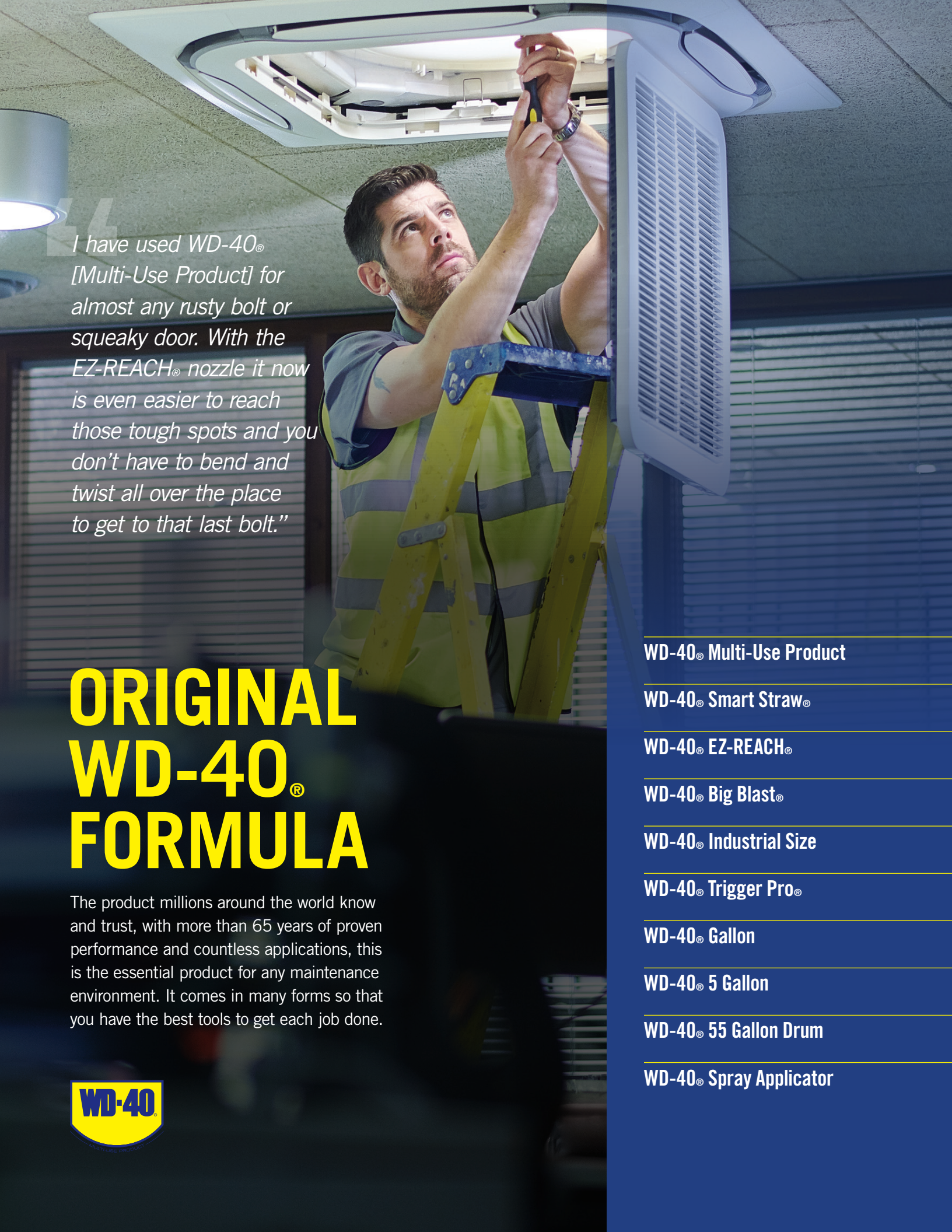
| | | | |
|---------------|---------------------|----------------------|--------------------|
| ITEM #: 30003 | NET WEIGHT: 6.5 OZ. | CASE ORDER #: 300035 | CASE UNITS: 6/CASE |
|---------------|---------------------|----------------------|--------------------|



DID YOU KNOW?

In 1953, an aerospace contractor first used Original WD-40® Formula (WD-40® Multi-Use Product) to protect the outer skin of the Atlas Missile from rust and corrosion. **Today the product has more than 2,000 uses.**

WD40company.com



*I have used WD-40®
[Multi-Use Product] for
almost any rusty bolt or
squeaky door. With the
EZ-REACH® nozzle it now
is even easier to reach
those tough spots and you
don't have to bend and
twist all over the place
to get to that last bolt."*

ORIGINAL WD-40® FORMULA

The product millions around the world know and trust, with more than 65 years of proven performance and countless applications, this is the essential product for any maintenance environment. It comes in many forms so that you have the best tools to get each job done.



WD-40® Multi-Use Product

WD-40® Smart Straw®

WD-40® EZ-REACH®

WD-40® Big Blast®

WD-40® Industrial Size

WD-40® Trigger Pro®

WD-40® Gallon

WD-40® 5 Gallon

WD-40® 55 Gallon Drum

WD-40® Spray Applicator



ORIGINAL WD-40® FORMULA

WD-40® MULTI-USE PRODUCT

The Original WD-40® Formula (official name WD-40® Multi-Use Product) is the most recognized and relied upon name in its class—protecting equipment from rust and corrosion, penetrating stuck parts, displacing moisture and lubricating almost anything. Available in a variety of delivery and application methods, to make any industrial job easier, safer and more efficient.

FEATURES

- Time-saving, easy-to-use
- Patented delivery systems
- Variety of sizes for any job, big or small
- Protects against corrosion
- Penetrates rusted bonds
- Dissolves adhesives and displaces moisture to dry out electrical systems

APPLICATIONS

Moving and rusted metal parts, hinges, wheels, pulleys, rollers, chains, gears, joints, conveyors, hoists, tools and more



One product with **thousands of uses**—protects metal from rust and corrosion, penetrates stuck parts, displaces moisture and lubricates almost anything.



WD-40® MULTI-USE PRODUCT

| | | | |
|---------------|-------------------|----------------------|---------------------|
| ITEM #: 49000 | NET WEIGHT: 3 OZ. | CASE ORDER #: 490002 | CASE UNITS: 12/CASE |
|---------------|-------------------|----------------------|---------------------|

WD-40® SMART STRAW®

| | | | |
|---------------|--------------------|----------------------|---------------------|
| ITEM #: 49002 | NET WEIGHT: 8 OZ. | CASE ORDER #: 490026 | CASE UNITS: 12/CASE |
| ITEM #: 49004 | NET WEIGHT: 11 OZ. | CASE ORDER #: 490040 | CASE UNITS: 12/CASE |
| ITEM #: 49005 | NET WEIGHT: 12 OZ. | CASE ORDER #: 490057 | CASE UNITS: 12/CASE |

WD-40® EZ-REACH®

| | | | |
|---------------|----------------------|----------------------|---------------------|
| ITEM #: 49019 | NET WEIGHT: 14.4 OZ. | CASE ORDER #: 490194 | CASE UNITS: 6 /CASE |
|---------------|----------------------|----------------------|---------------------|

WD-40® BIG BLAST®

| | | | |
|---------------|--------------------|----------------------|--------------------|
| ITEM #: 49009 | NET WEIGHT: 18 OZ. | CASE ORDER #: 490095 | CASE UNITS: 6/CASE |
|---------------|--------------------|----------------------|--------------------|

WD-40® INDUSTRIAL SIZE

| | | | |
|---------------|--------------------|----------------------|---------------------|
| ITEM #: 49008 | NET WEIGHT: 16 OZ. | CASE ORDER #: 490088 | CASE UNITS: 12/CASE |
|---------------|--------------------|----------------------|---------------------|

WD-40® TRIGGER PRO®

| | | | |
|---------------|--------------------|----------------------|--------------------|
| ITEM #: 49010 | NET WEIGHT: 20 OZ. | CASE ORDER #: 490108 | CASE UNITS: 6/CASE |
|---------------|--------------------|----------------------|--------------------|

WD-40® GALLON

| | | | |
|---------------|--------------------|----------------------|--------------------|
| ITEM #: 49011 | NET WEIGHT: 1 GAL. | CASE ORDER #: 490118 | CASE UNITS: 4/CASE |
|---------------|--------------------|----------------------|--------------------|

WD-40® 5-GALLON

| | |
|---------------|--------------------|
| ITEM #: 49012 | NET WEIGHT: 5 GAL. |
|---------------|--------------------|

WD-40® 55-GALLON

| | |
|---------------|---------------------|
| ITEM #: 49013 | NET WEIGHT: 55 GAL. |
|---------------|---------------------|

WD-40® SPRAY APPLICATOR

| | | |
|---------------|---------------------|--------------------|
| ITEM #: 10000 | CASE ORDER #: 10100 | CASE UNITS: 4/CASE |
|---------------|---------------------|--------------------|

...AND THAT'S
NOT ALL!

Check out some of WD-40 Company's other great products that are made tough enough for your work.

No matter your job need, WD-40 Company has a product to make your day easier—and help protect your equipment and the bottom line.



3-IN-ONE®

3-IN-ONE® MULTI-PURPOSE OIL

| | |
|----------------------|---------------------|
| ITEM #: 10070 | NET WEIGHT: 4 OZ. |
| CASE ORDER #: 100703 | CASE UNITS: 12/CASE |

3-IN-ONE® MULTI-PURPOSE OIL

| | |
|---------------------|---------------------|
| ITEM #: 10038 | NET WEIGHT: 8 OZ. |
| CASE ORDER #: 10138 | CASE UNITS: 12/CASE |

3-IN-ONE® GARAGE DOOR LUBE

| | |
|----------------------|--------------------|
| ITEM #: 10058 | NET WEIGHT: 11 OZ. |
| CASE ORDER #: 100581 | CASE UNITS: 6/CASE |

3-IN-ONE® LOCK DRY LUBE

| | |
|----------------------|---------------------|
| ITEM #: 12007 | NET WEIGHT: 2.5 OZ. |
| CASE ORDER #: 120077 | CASE UNITS: 12/CASE |

3-IN-ONE® ALL-TEMP SILICONE DRIP OIL

| | |
|----------------------|---------------------|
| ITEM #: 12000 | NET WEIGHT: 4 OZ. |
| CASE ORDER #: 120008 | CASE UNITS: 12/CASE |

3-IN-ONE® FAST-ACTING PENETRANT DRIP OIL

| | |
|----------------------|---------------------|
| ITEM #: 12001 | NET WEIGHT: 4 OZ. |
| CASE ORDER #: 120015 | CASE UNITS: 12/CASE |

3-IN-ONE® DRY-TO-TOUCH LUBE DRIP OIL

| | |
|----------------------|---------------------|
| ITEM #: 12002 | NET WEIGHT: 4 OZ. |
| CASE ORDER #: 120022 | CASE UNITS: 12/CASE |

3-IN-ONE® MULTI-PURPOSE PTFE LUBE DRIP OIL

| | |
|----------------------|---------------------|
| ITEM #: 12003 | NET WEIGHT: 4 OZ. |
| CASE ORDER #: 120039 | CASE UNITS: 12/CASE |

3-IN-ONE® PROFESSIONAL-GRADE PNEUMATIC TOOL DRIP OIL

| | |
|----------------------|---------------------|
| ITEM #: 12004 | NET WEIGHT: 4 OZ. |
| CASE ORDER #: 120046 | CASE UNITS: 12/CASE |

3-IN-ONE® LONG-LASTING MOTOR OIL (SAE 20)

| | |
|----------------------|---------------------|
| ITEM #: 10045 | NET WEIGHT: 3 OZ. |
| CASE ORDER #: 101456 | CASE UNITS: 24/CASE |

3-IN-ONE® MULTI-PURPOSE OIL LOCKING SPOUT

| | |
|----------------------|---------------------|
| ITEM #: 10070 | NET WEIGHT: 4 OZ. |
| CASE ORDER #: 100703 | CASE UNITS: 12/CASE |



LAVA® BAR SOAP

| | |
|---------------------|----------------------|
| ITEM #: 10085 | NET WEIGHT: 5.75 OZ. |
| CASE ORDER #: 10185 | CASE UNITS: 24/CASE |

LAVA® BAR SOAP TWIN

| | |
|---------------------|----------------------|
| ITEM #: 10086 | NET WEIGHT: 5.75 OZ. |
| CASE ORDER #: 10186 | CASE UNITS: 12/CASE |



2000 FLUSHES® CHLORINE AUTOMATIC TOILET BOWL CLEANER

| | |
|----------------------|----------------------|
| ITEM #: 29007 | NET WEIGHT: 1.25 OZ. |
| CASE ORDER #: 290071 | CASE UNITS: 12/CASE |

2000 FLUSHES® CHLORINE AUTOMATIC TOILET BOWL CLEANER TWIN PACK

| | |
|----------------------|---------------------|
| ITEM #: 29008 | NET WEIGHT: 2.5 OZ. |
| CASE ORDER #: 290088 | CASE UNITS: 6/CASE |

2000 FLUSHES® BLUE PLUS BLEACH

| | |
|----------------------|---------------------|
| ITEM #: 20801 | NET WEIGHT: 3.5 OZ. |
| CASE ORDER #: 208017 | CASE UNITS: 12/CASE |

2000 FLUSHES® BLUE PLUS BLEACH TWIN PACK

| | |
|----------------------|--------------------|
| ITEM #: 20808 | NET WEIGHT: 7 OZ. |
| CASE ORDER #: 208082 | CASE UNITS: 6/CASE |

2000 FLUSHES® BLUE PLUS DETERGENTS
AUTOMATIC TOILET BOWL CLEANER

| | |
|----------------------|---------------------|
| ITEM #: 20102 | NET WEIGHT: 3.5 OZ. |
| CASE ORDER #: 201020 | CASE UNITS: 12/CASE |



SPOT SHOT® PROFESSIONAL INSTANT CARPET STAIN REMOVER

| | |
|----------------------|---------------------|
| ITEM #: 00993 | NET WEIGHT: 18 OZ. |
| CASE ORDER #: 009934 | CASE UNITS: 12/CASE |

SPOT SHOT® PROFESSIONAL INSTANT CARPET STAIN REMOVER
TRIGGER SPRAY

| | |
|----------------------|---------------------|
| ITEM #: 00972 | NET WEIGHT: 32 OZ. |
| CASE ORDER #: 009729 | CASE UNITS: 12/CASE |

SPOT SHOT® PET INSTANT CARPET STAIN & ODOR ELIMINATOR
(NON-TOXIC)

| | |
|----------------------|--------------------|
| ITEM #: 00920 | NET WEIGHT: 14 OZ. |
| CASE ORDER #: 009208 | CASE UNITS: 6/CASE |



wd40.com

WD-40 Company Customer Relations

1-888-324-7596