



# Farm Solutions

PRODUCT GUIDE





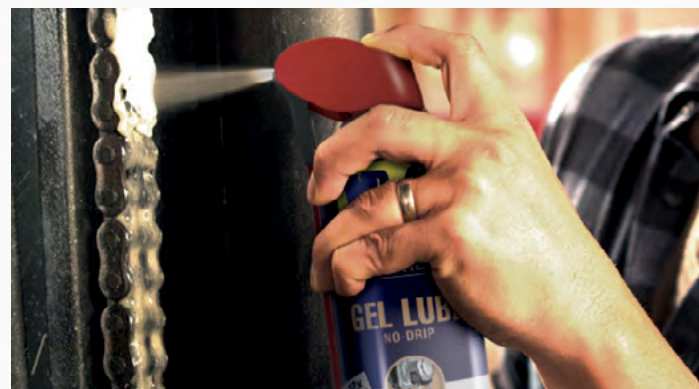
# YOU KNOW THE WD-40® BRAND NAME...

## BUT DO YOU KNOW ALL IT CAN DO FOR YOUR DAILY NEEDS?



Our time-tested formulas have been solving problems across a variety of industries for more than 65 years.

From growing and harvesting crops to maintaining your tools and equipment, pros can count on WD-40® Brand products to keep their business moving with versatile delivery systems that offer a unique combination of safe, powerful and specialized formulas designed to increase efficiency, reduce downtime and minimize risk—everything you need to get the job done right.



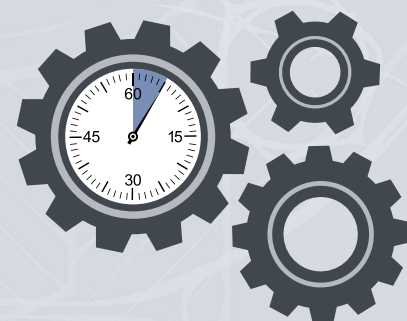
**PROVEN AND EFFECTIVE FORMULAS  
FOR TOUGH ENVIRONMENTS**

Lab testing shows that WD-40® Brand products outperform other brands in critical performance tests for dependability and value you can count on.



**REDUCE DOWNTIME AND PROTECT  
YOUR EQUIPMENT, TOOLS & ASSETS**

WD-40® Brand products help protect assets to promote longer equipment life, prevent unscheduled downtime due to unexpected equipment failure, and help avoid accidents and injuries caused by poorly maintained equipment.



**SAFETY AND COMPLIANCE  
ARE OUR TOP PRIORITIES**

All WD-40® Brand products are formulated to minimize the risk of harm to people, surfaces and the environment.<sup>1</sup> Our safer product formulations do not require warnings for cancer, birth defects or other reproductive harm.<sup>2</sup> Use of WD-40® Brand products can help reduce personal, legal and regulatory risk.



<sup>1</sup> When used and disposed of as directed.

<sup>2</sup> No warnings for our products are required by California Proposition 65, the Safe Drinking Water and Toxic Enforcement Act of 1986.




**INDUSTRY-LEADING, INNOVATIVE  
SOLUTIONS MAKE YOUR JOB EASIER**

WD-40® Brand has been a trusted name in maintenance products for more than 65 years. We strive to continuously improve and innovate with products designed to tackle any challenge.







*“Found this product by WD-40 [Company] is absolutely perfect and the best out of any other product on the market that we have tried!”*

# LUBRICANTS & PENETRANTS

We offer an assortment of fast-acting lubricants that are proven to withstand the high-performance environments in which you work. They'll keep parts moving smoothly, unstick stuck parts quickly and deliver long-lasting performance to keep operations running.



**SPECIALIST**

Silicone

White Lithium Grease

Dry Lube

Gel Lube

Roller Chain Lube

Penetrant

WD-40 Specialist® Brand products are represented using new can design and will vary in availability as we work through a rolling change.



SPECIALIST.

# SILICONE

It lubricates. It resists water. It protects surfaces from residue. What's even better? It dries without leaving stickiness for you to clean.

## FEATURES

- Lubricates, resists water and protects metal and non-metal surfaces
- Dries with no stickiness or messy residue
- Safe to use on non-metal surfaces such as plastic and rubber parts
- NSF Nonfood Compounds Program Listed H2 #146863
- Working temperature range—  
-100°F to 500°F

## APPLICATIONS

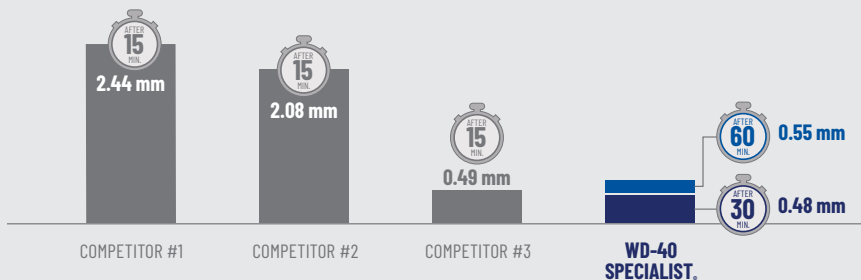
Nuts, bolts, pins, screws, bushings, cables, pulleys, sliding mechanisms, valves, linkages, hinges, locks



Lubricates at least 2x longer than the competition for less frequent applications.

## 4 BALL WEAR TEST

Modified (Longevity)



Results show width of scar at specified times. Lower number means less scarring and better protection for longer periods of time.

Test Lab: WD-40 Technical Center (Pine Brook, NJ); ASTM D4172 Modified (Longevity); Tested 03/2021.

ITEM #: 30001	NET WEIGHT: 11 OZ.	CASE ORDER #: 300012	CASE UNITS: 6/CASE
---------------	--------------------	----------------------	--------------------







**SPECIALIST.**

# WHITE LITHIUM GREASE

Have a job that requires heavy-duty lubrication? WD-40 Specialist® White Lithium Grease sprays on evenly as a liquid and sets dry for a thick, protective coating that won't run off, making it a perfect match for metal-to-metal applications.

## FEATURES

- Long-lasting lubrication and protection
- Leaves a rust-inhibiting barrier
- Won't freeze, melt or run off
- NSF Nonfood Compounds Program Listed H2 #146864
- Working temperature range—0°F to 300°F

## APPLICATIONS

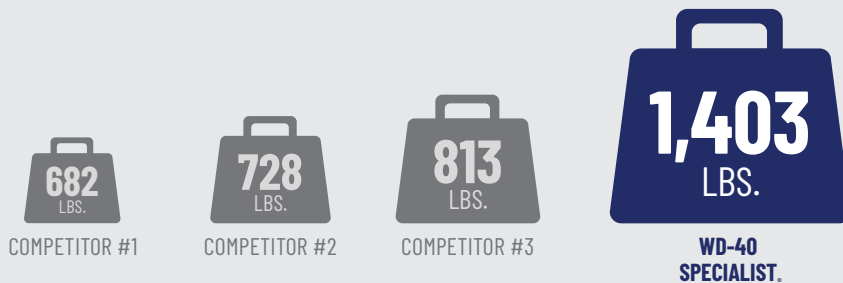
Lubricates doors and tracks, hinges, chains, linkages, latches, pulleys, cables and guide rails, tow bars, dock doors and outdoor rails



**Withstands 1.5x more pressure than the competition** for less frequent reapplication and reduced downtime.



## EXTREME PRESSURE TEST



Test measures the load carrying properties of a lubricant.

Test Lab: WD-40 Technical Center (Pine Brook, NJ); ASTM D3233A; Tested 12/2020.

ITEM #: 30061	NET WEIGHT: 10 OZ.	CASE ORDER #: 300615	CASE UNITS: 6/CASE
---------------	--------------------	----------------------	--------------------





**SPECIALIST.**

# DRY LUBE

Not even the highest temperatures pose a problem with WD-40 Specialist® Dry Lube. Our spray, which is safe on multiple surfaces, reduces friction while providing long-lasting lubrication and corrosion protection. It dries quickly, leaves no oily residue, and resists dirt, dust and oil.

## FEATURES

- PTFE formula reduces friction and wear, and enhances performance
- Resists dust, oil and dirt accumulation
- NSF Nonfood Compounds Program Listed H2 #146856
- Working temperature range—  
-50°F to 500°F

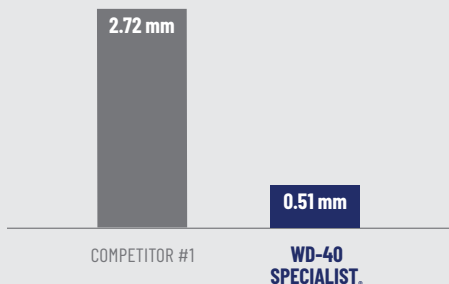
## APPLICATIONS

Garage door rollers and springs, hopper tracks on the bottom of trucks, machine parts, pulleys, hinges, chains, sheers or other cutting equipment

Provides 5x greater wear protection and lubricates at least 4x longer than the competition for reduced application frequency.

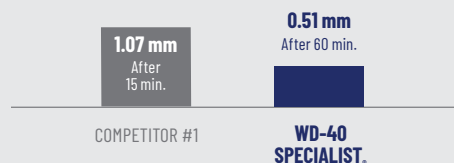


## 4 BALL WEAR TEST



## 4 BALL WEAR TEST

Modified (Longevity)



4 Ball Wear Test: Results show width of scar after 60 minutes at 12,000 RPM.  
Modified (Longevity) Test: Results show width of scar at specified times. **Lower number means less scarring and better protection.**  
Test Lab: WD-40 Technical Center (Pine Brook, NJ); ASTM D4172, Tested 12/2020 and ASTM D4172 Modified (Longevity), Tested 04/2021.

ITEM #: 30005	NET WEIGHT: 10 OZ.	CASE ORDER #: 300059	CASE UNITS: 6/CASE
---------------	--------------------	----------------------	--------------------







SPECIALIST.

# GEL LUBE

Our unique gel lubricant sprays on thick and won't run, drip or make a mess. The no-drip formula is powerful enough to provide **12x longer-lasting lubrication\*** and it also prevents rust and corrosion for up to one year\*\*—creating a more productive and efficient workplace.

## FEATURES

- Thick, no drip, no mess, non-fling
- Stays where you spray it; perfect for vertical surfaces
- Self-healing characteristics
- Safe on metals, plastics and rubber
- Working temperature range—  
-100°F to 500°F
- No-drip formula

## APPLICATIONS

Moving parts, vertical surfaces, chains, cables, gears, pallet forks, bushings, bearings, lift gates, garage doors

Lubricates 15x longer than the competition.

## LONG-LASTING LUBRICATION TEST



Test measures length of lubrication under pounds of force before breakdown.

Test Lab: Petro-Lubricant Testing Labs (Lafayette, NJ); ASTM D5620; Tested 04/2020.

ITEM #: 30010	NET WEIGHT: 10 OZ.	CASE ORDER #: 300103	CASE UNITS: 6/CASE
---------------	--------------------	----------------------	--------------------

\* Compared to WD-40® Multi-Use Product using independent lab test ASTM D5620.

\*\* Independent lab tests conducted in humidity chamber. Results vary depending on extreme conditions.





SPECIALIST.

# ROLLER CHAIN LUBE

Thickens, repels dirt, stays put—Advanced Ceramic Reinforced lubricant sprays on thin to penetrate deep into the chain and protects it from breaking prematurely. It then thickens to provide proven, long-lasting lubrication.

## FEATURES

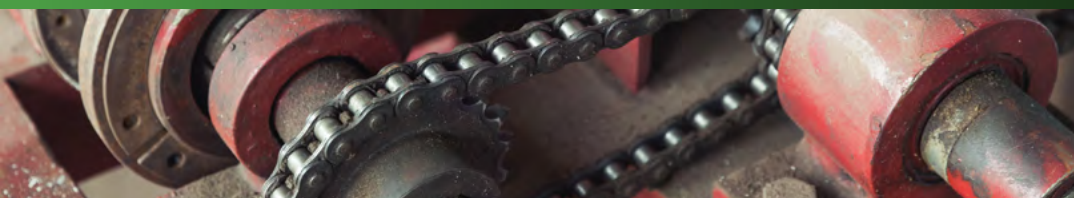
- Protects chains from premature breakage\*
- Repels dirt, displaces contaminants and traps moisture
- Non-fling at high RPM
- Provides long-lasting lubrication
- Working temperature range—  
-40°F to 400°F

## APPLICATIONS

Chains, sprockets, chain links, O-ring chains, lubricates the drive chains on a planter, and rollers



Penetrates inner chain links, O-rings, pins and bushings, and stays in place to protect.



1. Penetrates into chain inner links, pins, bushings and rollers

2. Displaces contaminants and trapped moisture

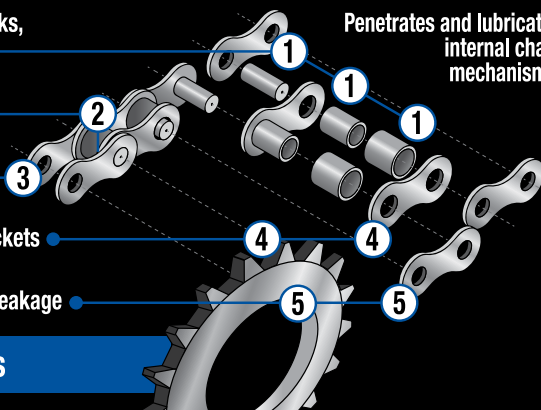
3. Dries quickly inside links (non-fling)

4. Provides long-lasting lubrication on chain and sprockets

5. Protects chains and sprockets against rust and premature breakage

Penetrates and lubricates internal chain mechanisms.

Safe on O-Ring chains



ITEM #: 30049

NET WEIGHT: 10 OZ.

CASE ORDER #: 300493

CASE UNITS: 6/CASE

\* Based on proper chain maintenance extending the life of the chain. Proper maintenance for roller chain is cleaning and lubricating external parts (chains and sprockets), and also the internal parts (chain links).





# PENETRANT AND PENETRANT WITH EZ-REACH®

Penetrates up to 2x faster  
than competitors, which means less  
downtime and faster return to service.

Provides 10x longer surface rust  
protection than the competition  
for extended equipment life and  
reduced reapplications.

Innovative and proven effective, this rust-busting formula gets into tight crevices, threads, locks, chains and seams to break bonds that hold stuck parts together. To make your job easier, we took it a step further by attaching an eight-inch flexible straw that bends, keeps its shape and sprays two ways, giving you easier access to hard-to-reach spaces.

### FEATURES

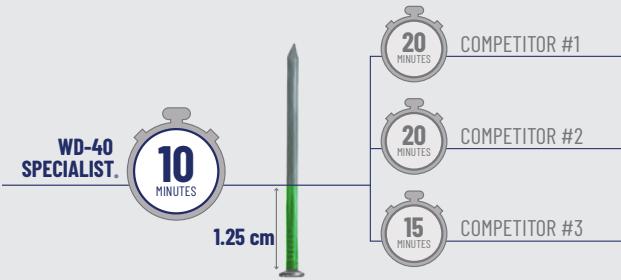
- Proprietary penetrating formula releases tough rusted parts with minimal effort
- Fast-acting formula penetrates deep into crevices, threads and seams
- Prevents rust and corrosion from re-forming
- Safe on metals, plastics and rubber
- Displaces water better than competitive brands
- Working temperature range—0°F to 400°F

### APPLICATIONS

Rusted metal threads, nuts, bolts, pins, screws, bushings, cables, pulleys, sliding mechanisms, valves, linkages, hinges, locks, chains

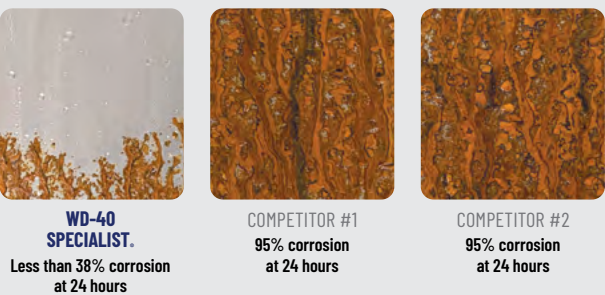


### NAIL CLIMB TEST



Test measures the penetrating ability of a fluid. **The less time to penetrate, the better.**  
Test Lab: Fred Cuneo (3rd party); Tested 03/2021.

### SALT SPRAY CORROSION PROTECTION TEST



This test is used to measure the level of corrosion protection provided by a test fluid.  
Test Lab: WD-40 Technical Center (Pine Brook, NJ); ASTM B117; Tested 02/2021.

### PENETRANT

ITEM #: 30000	NET WEIGHT: 11 OZ.
CASE ORDER #: 300004	CASE UNITS: 6/CASE

### PENETRANT WITH EZ-REACH®

ITEM #: 30048	NET WEIGHT: 13.5 OZ.
CASE ORDER #: 300486	CASE UNITS: 6/CASE

# DID YOU KNOW?

**WD-40® Brand products are formulated with clean solvents and oils that have been treated to remove harmful (chemical) contaminants.**



*“Exactly what you need to degrease those hard-to-reach spots. Eats the grease, and wipes away clean. Excellent, excellent product.”*

# CLEANERS & DEGREASERS

Engineered to be powerful yet safe, our industrial-strength cleaners and degreasers keep your facilities and equipment running smoother, lasting longer and looking like new.



SPECIALIST

Contact Cleaner

Machine & Engine Degreaser

Carb/Throttle Body Cleaner

Degreaser (Aerosol)

Cleaner & Degreaser  
(Non-Aerosol)

WD-40 Specialist® Brand products are represented using new can design and will vary in availability as we work through a rolling change.



**SPECIALIST.**

# CONTACT CLEANER

With this cleaner, oil, dirt, flux residue and condensation from sensitive electronics and electrical equipment are blasted away with pin-point precision. Our industry-leading Smart Straw® technology makes application accurate. The spray dries quickly, leaving no residue, and removes a wide range of contaminants, making it a top choice among automotive professionals.

## FEATURES

- Kb cleaning score of 250 vs. mineral spirits (Kb 25)
- Quick-drying with no residue
- Dielectric Strength >20,000 volts
- Safe on most plastics<sup>1</sup>, rubber and metal
- NSF Nonfood Compounds Program Listed K2 #146857

<sup>1</sup> Test on plastic before using, and avoid adhesives, device screens and keyboards. Always check with the device manufacturer before performing maintenance.

## APPLICATIONS

Fuse boxes, circuit boards, controls, switches, precision instruments, electric panels, generators, electric motors, armatures, electrical connectors, machine circuit boards



Removes over 95% of common surface contaminants for optimal performance.

## REMOVES A WIDE VARIETY OF CONTAMINANTS

FLUX  
PASTE

SILICONE  
GREASE

USED  
MOTOR  
OIL

TOOL  
LUBRICANT

HYDRAULIC  
OIL



ITEM #: 30055

NET WEIGHT: 11 OZ.

CASE ORDER #: 300554

CASE UNITS: 6/CASE





**SPECIALIST.**

# MACHINE & ENGINE DEGREASER



Our water-based aerosol formula provides deep, foaming, penetrating action and a powerful stream that sprays up to five feet to quickly and easily remove grease, oil, dirt and grime without the time and trouble of disassembly.

## FEATURES

- Low odor, water-based formula
- Deep penetrating foaming action gets into cracks and crevices
- Quickly removes grease, oil, dirt and grime
- No rinsing required; low residue for a clean finish
- NSF Nonfood Compounds Program Listed C1 #146737

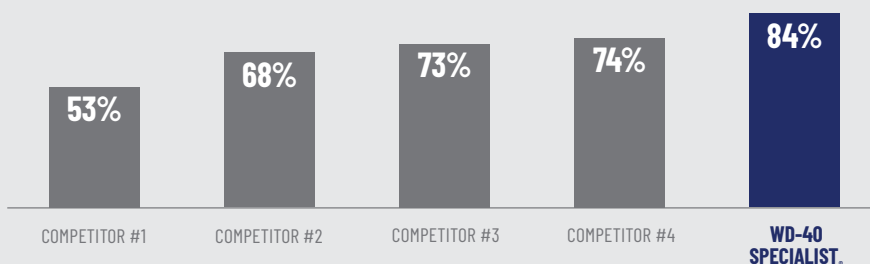
## APPLICATIONS

Engines, gears and chains, forklifts, winches, power equipment, metal tools, engine bay, power tools and machinery

Removes automotive and industrial particulate soil faster than the competition.



## EXTREME CLEANING SCORE



Test evaluates the cleaning ability of a fluid using a mechanical device. Score shows percent of soil removed.

Test Lab: Sterling Laboratories (Toledo, OH); ASTM D4488-A3; Tested 05/2020.

ITEM #: 30007	NET WEIGHT: 18 OZ.	CASE ORDER #: 300070	CASE UNITS: 4/CASE
---------------	--------------------	----------------------	--------------------





**SPECIALIST.**

# CARB/THROTTLE BODY CLEANER



It's the only all-in-one spray you need to clean your carburetor, throttle body and unpainted metal parts. It is a powerful solvent-based cleaner that blasts away tough carbon deposits, oil and grime with a unique dual-action cleaning system that breaks it up and doesn't leave behind residue.

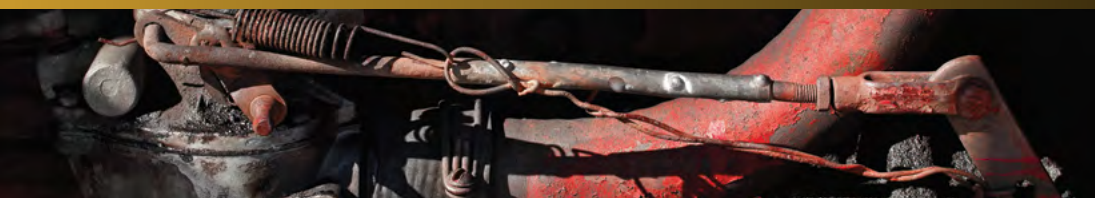
## FEATURES

- Powerful formula breaks up and blasts away tough deposits
- Proven to improve performance at high RPMs
- Reduced splash-back and overspray
- Safe on oxygen sensors or catalytic converters upon incidental contact

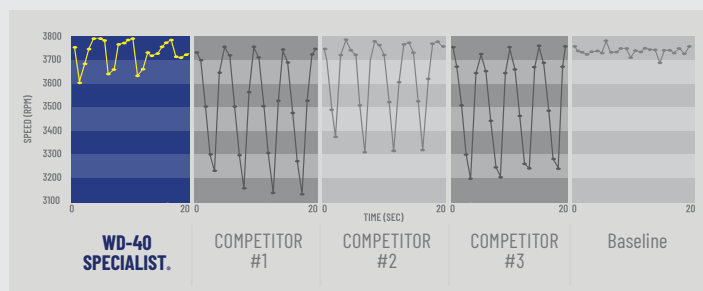
## APPLICATIONS

Carburetors, throttle body, gas-powered equipment, fleet maintenance, non-painted metal parts

Powerful formula quickly breaks up and blasts away tough deposits for superior performance at high RPM.



## STALLING EFFECTS AT HIGH SPEED



Results show average RPM after products are applied and recorded for standard deviation from the average. Closer to baseline and smaller standard deviation is better as these imply minimal stalling effects.

Test Lab: Intertek Carnot Emission Services (San Antonio, TX); Tested 05/2013.



- Powerful Formula Blasts Away Tough Deposits
- Dual-Action Cleaning

ITEM #: 30013

NET WEIGHT: 13.5 OZ.

CASE ORDER #: 300134

CASE UNITS: 6/CASE





**SPECIALIST.**

# DEGREASER



A powerful solvent-based degreaser that quickly cleans machinery, engines and equipment to run smooth and look like new. Our fast-acting formula contains **PowerSolve Technology**—a proprietary solvent that quickly breaks down grease, as well as oil, dirt, tar, adhesives and more.

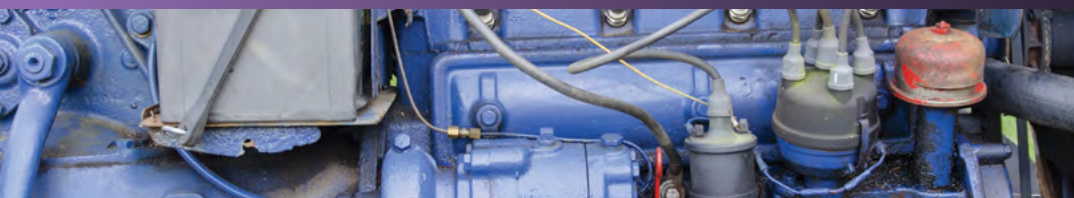
## FEATURES

- Contains fast-acting **PowerSolve Technology**®
- Safe on metals, plastics, rubber and glass
- High liquid flashpoint of 202°F
- No residue
- Low fumes
- NSF Nonfood Compounds Program Listed K1 #150956

## APPLICATIONS

Automotive, truck and tractor engines, tire rims, gears and chains, farm equipment/machinery, power equipment, winches, metal rope or wire, cleaning out grease fittings or wheel bearings, other metal tools

**Industrial-strength formula quickly removes tough dirt, grease and grime.** Safe on plastics, rubbers, glass, metals and more.



## SAFE FOR USE ON:

### METALS

Aluminum  
Chrome  
Copper-C110 Alloy (Unpolished)  
Galvanized Steel  
Magnesium  
Steel (Cold Roll, Unpolished)  
Titanium (Unpolished)  
Zinc

### PLASTICS / RUBBERS / NON-METALS

Acetal  
Carbon Fiber  
Copolymer  
Neoprene (Hard Rubber)



Test Lab: UL (Canton, MA); Surface Compatibility (Deleterious Effects to Hard Surfaces); Test date: 06/2014.



- Fast Acting
- Multi-Surface
- No Residue

ITEM #: 30028

NET WEIGHT: 15 OZ.

CASE ORDER #: 300280

CASE UNITS: 6/CASE



**SPECIALIST**

# CLEANER & DEGREASER

Engineered and proven to be more powerful and safer than other degreasers on the market, WD-40 Specialist® Cleaner & Degreaser is formulated with a unique bio-solvent that quickly breaks through tough grease and grime, protects against flash rust and is safe for use on sensitive surfaces—meeting the EPA's Safer Choice Certification criteria for safety and efficacy.

## FEATURES

- Formulated with a biodegradable solvent
- Safe for food-processing facilities
- Contains anti-corrosion additives to prevent flash rust
- Non-flammable, non-corrosive and non-abrasive
- Low odor/fragrance-free
- NSF Nonfood Compounds Program Listed A1, A2, A4, A8, B1 #153187

## APPLICATIONS

**Automotive and tractor parts, tools, farm equipment/machinery, commercial appliances and equipment, power washers**



EPA/Safer Choice recognition does not constitute endorsement of this product. The Safer Choice label signifies that the product's formula, as WD-40 Company has represented it to the EPA, contains ingredients with more positive human health and environmental characteristics than conventional products of the same type. EPA/Safer Choice relies solely on WD-40 Company, its integrity and good faith, for information on the product's composition, ingredients and attributes. EPA/Safer Choice has not independently identified, that is, via chemical analysis, the ingredients in the product formula, nor evaluated any of WD-40 Company non-ingredient claims. EPA/Safer Choice provides its evaluation only as to the product's human health and environmental characteristics, as specified in the Safer Choice Standard and based on currently available information and scientific understanding.

**Outperforms competitors in surface compatibility tests** on sensitive surfaces such as aluminum and glass.

### CLEANER & DEGREASER REFILL

ITEM #: 30034	NET WEIGHT: 24 OZ.	CASE ORDER #: 300349	CASE UNITS: 6/CASE
---------------	--------------------	----------------------	--------------------

### CLEANER & DEGREASER (32 OZ.)

ITEM #: 30035	NET WEIGHT: 32 OZ.	CASE ORDER #: 300356	CASE UNITS: 6/CASE
---------------	--------------------	----------------------	--------------------

### CLEANER & DEGREASER GALLON

ITEM #: 30036	NET WEIGHT: 1 GAL.	CASE ORDER #: 300363	CASE UNITS: 4/CASE
---------------	--------------------	----------------------	--------------------

### CLEANER & DEGREASER 5-GALLON


ITEM #: 30047	NET WEIGHT: 5 GAL.
---------------	--------------------

### CLEANER & DEGREASER 55-GALLON

ITEM #: 30038	NET WEIGHT: 55 GAL.
---------------	---------------------





A man with a grey beard, wearing a straw hat with a red band and a red quilted vest over a plaid shirt, is focused on working on a piece of rusty machinery. The background shows more industrial equipment and large storage tanks.

*For anyone who hasn't used this, it is superb for stopping rust on items in high humidity or wet locations. Protects long after many (most) oils have failed."*

# RUST MANAGEMENT

Preventing and removing rust is an important part of facility and equipment maintenance, repair and operations. Whether you are looking to prevent or remove rust, we have a product for the job.



**SPECIALIST**

**Rust Remover Soak**

**Corrosion Inhibitor**

WD-40 Specialist® Brand products are represented using new can design and will vary in availability as we work through a rolling change.



**SPECIALIST.**

# RUST REMOVER SOAK

WD-40 Specialist® Rust Remover Soak safely and effectively removes rust without acids or caustic chemicals. This formula is non-toxic, contains no VOCs and works without harming surrounding surfaces. It restores even intricate, hard-to-reach surfaces to clean, bare metal that is ready to paint, and brightens copper, brass and similar alloys.

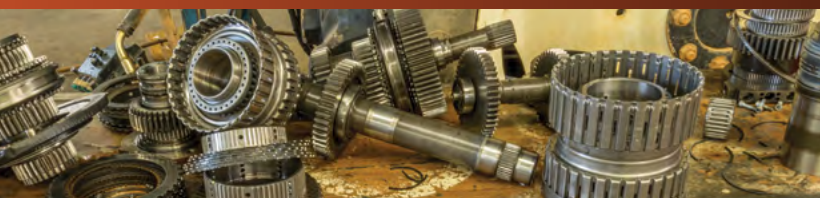
## FEATURES

- Removes rust and other corrosion, but safe for surrounding areas
- No need for scraping, chipping or scrubbing
- Non-toxic fumes and acid-free
- NSF Nonfood Compounds Program Listed P1 #146753
- Formulated to be non-irritating to skin

## APPLICATIONS

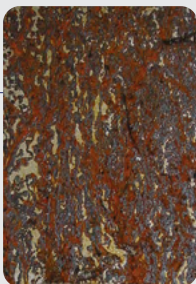
Tools, metal, cast iron, chrome parts, copper, brass and other alloys, tractor parts, fasteners

**Fast-acting formula removes rust and restores surfaces** to bare metal without caustic chemicals or harsh acids with minimal downtime.



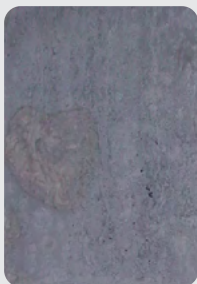
## SOAK TEST

6-Hour  
Salt Exposure



WD-40  
SPECIALIST.

4-Hour  
Rust Remover  
Soak Treatment



Rusty steel panels are dipped in rust-removing fluid.

Test Labs: Matco Services Inc. (Division of Valmont Industries, Pittsburgh, PA)  
The Lubrizol Corporation (Wickliffe, Ohio); Tested on 9/6/2011.



ITEM #: 30004

NET WEIGHT: 1 GAL.

CASE ORDER #: 300042

CASE UNITS: 4/CASE





**SPECIALIST.**

# CORROSION INHIBITOR

Get ahead of the problem with this long-lasting corrosion inhibitor that protects metal parts by blocking rust and corrosion for up to 1 year outdoors or 2 years indoors. Ideal for preventive maintenance applications in challenging environments such as high humidity and long-term storage. The non-drying formula continues to work even if some of the coating gets rubbed off, re-sealing the vulnerable surface.

## FEATURES

- Vapor Corrosion Inhibitors seal and protect to block corrosion
- Works indoors and outdoors
- Protects metals up to two years
- NSF Nonfood Compounds Program Listed A7 #146726

## APPLICATIONS

Machined surfaces, equipment and metal parts subjected to extended storage periods, tools, chains, cables



Only 5% rust after 1,200 hours of exposure to salt spray, meaning less frequent reapplication for time- and cost-savings, and longer protection of valuable assets.

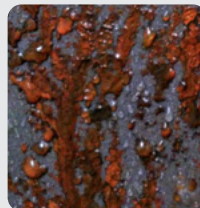
## CORROSION PROTECTION



**WD-40  
SPECIALIST.**  
2,000 HRS.



COMPETITOR #1  
24 HRS.




COMPETITOR #1  
48 HRS.

This test is used to measure the level of corrosion protection of a test fluid under extreme conditions.

Test Lab: Petro-Lubricant Laboratories Inc. (Lafayette, NJ); ASTM B117; Tested on 05/2020.

ITEM #: 30003	NET WEIGHT: 6.5 OZ.	CASE ORDER #: 300035	CASE UNITS: 6/CASE
---------------	---------------------	----------------------	--------------------





*“It’s easy to work with, whether hand applying or using a mechanical grease gun. Regardless of the temperature, it can easily be spread but it also doesn’t run—it stays put. So long other grease gun cartridges, I’ll be using WD-40 [Specialist® Greases] from now on.”*

# GREASES

We provide an assortment of greases that are proven to withstand extreme conditions, allowing you to protect your equipment and get your job done right.



SPECIALIST

**Heavy-Duty Grease**

**High-Temp Grease**

**Extreme Pressure Grease**

**Marine-Grade Grease**

WD-40 Specialist® Brand products are represented using new can design and will vary in availability as we work through a rolling change.





**SPECIALIST.**

# HEAVY-DUTY GREASE

WD-40 Specialist® Heavy-Duty Grease is a versatile solution with properties even lithium greases don't offer. With a dropping point above 650°F, it also provides marine-grade water resistance and protection against rust and corrosion. Engineered for high-speed and heavy-duty applications, Heavy-Duty Grease is an excellent choice for lubricating machinery in damp conditions.

## FEATURES

- Withstands extreme temperatures
- Performs under extreme pressure
- Superior water resistance
- Long-lasting corrosion protection

Provides more than **2x the load wear protection** for superior lubrication and longer-lasting performance.



## LOAD WEAR TEST



Test measures the relative ability of a lubricant to prevent wear under applied loads.

Test Lab: Petro-Lubricant Testing Labs (Lafayette, NJ); ASTM D2596; Tested 03/2020.

ITEM #: 30042	NET WEIGHT: 14 OZ.	CASE ORDER #: 300424	CASE UNITS: 10/CASE
---------------	--------------------	----------------------	---------------------





# HIGH-TEMP GREASE

# EXTREME PRESSURE GREASE

# MARINE-GRADE GREASE

The WD-40 Specialist® line of greases gives surfaces the protection they need regardless of the environment. Whether your work involves high temperatures, high pressure or the need for protection from water, you can trust these products to lubricate and protect so you can fight wear and keep your equipment running smoother for longer periods of time.

FEATURES

- Excellent corrosion protection
- Outstanding performance under heavy-metal loads
- 625°F drop point
- Working temperature range— -40°F to 325°F



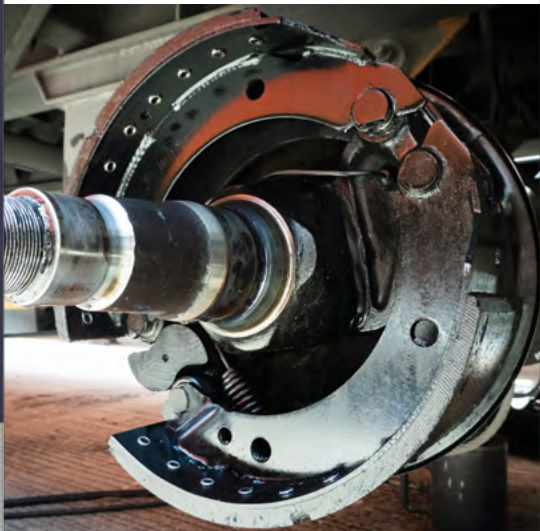
HIGH-TEMP GREASE

ITEM #: 30039
NET WEIGHT: 14 OZ.
CASE ORDER #: 300394
CASE UNITS: 10/CASE



FEATURES

- Extreme pressure lubrication
- Outstanding surface protection against heavy load and wear
- 600°F drop point
- Working temperature range— -40°F to 325°F



EXTREME PRESSURE GREASE

ITEM #: 30040
NET WEIGHT: 14 OZ.
CASE ORDER #: 300400
CASE UNITS: 10/CASE



FEATURES

- Excellent water wash-out performance
- Maximum lubrication for extreme marine applications
- 620°F drop point
- Working temperature range— -40°F to 325°F



MARINE-GRADE GREASE

ITEM #: 30041
NET WEIGHT: 14 OZ.
CASE ORDER #: 300417
CASE UNITS: 10/CASE



All of our greases deliver up to **25% higher drop point**.\*

\*Compared to conventional lithium-based greases.



# DID YOU KNOW?

In 1953, an aerospace contractor first used WD-40® Multi-Use Product to protect the outer skin of the Atlas Missile from rust and corrosion.

**Today the product has more than 2,000 uses.**

[WD40company.com](http://WD40company.com)

*I have used WD-40®  
[Multi-Use Product] for  
almost any rusty bolt or  
squeaky door. With the  
EZ-REACH® nozzle it now  
is even easier to reach  
those tough spots and you  
don't have to bend and  
twist all over the place  
to get to that last bolt."*

# WD-40® MULTI-USE PRODUCT

The product millions around the world know and trust, with more than 65 years of proven performance and countless applications, this is the essential product for any maintenance environment. It comes in many forms so that you have the best tools to get each job done.



WD-40® Multi-Use Product

WD-40® Smart Straw®

WD-40® EZ-REACH®

WD-40® Big Blast®

WD-40® Industrial Size

WD-40® Trigger Pro®

WD-40® Gallon

WD-40® 5 Gallon

WD-40® 55 Gallon Drum

WD-40® Spray Applicator





# MULTI-USE PRODUCT

WD-40® Multi-Use Product is the most recognized and relied upon name in its class—protecting equipment from rust and corrosion, penetrating stuck parts, displacing moisture and lubricating almost anything. Available in a variety of delivery and application methods, to make any job easier, safer and more efficient.

## FEATURES

- Time-saving, easy-to-use
- Patented delivery systems
- Variety of sizes for any job, big or small
- Protects against corrosion
- Penetrates rusted bonds
- Dissolves adhesives and displaces moisture to dry out electrical systems

## APPLICATIONS

Moving and rusted metal parts, hinges, wheels, pulleys, rollers, chains, gears, joints, conveyors, hoists, tools and more



One product with **thousands of uses**—protects metal from rust and corrosion, penetrates stuck parts, displaces moisture and lubricates almost anything.



### WD-40® MULTI-USE PRODUCT

ITEM #: 49000	NET WEIGHT: 3 OZ.	CASE ORDER #: 490002	CASE UNITS: 12/CASE
---------------	-------------------	----------------------	---------------------

### WD-40® SMART STRAW®

ITEM #: 49002	NET WEIGHT: 8 OZ.	CASE ORDER #: 490026	CASE UNITS: 12/CASE
ITEM #: 49004	NET WEIGHT: 11 OZ.	CASE ORDER #: 490040	CASE UNITS: 12/CASE
ITEM #: 49005	NET WEIGHT: 12 OZ.	CASE ORDER #: 490057	CASE UNITS: 12/CASE

### WD-40® EZ-REACH®

ITEM #: 49019	NET WEIGHT: 14.4 OZ.	CASE ORDER #: 490194	CASE UNITS: 6 /CASE
---------------	----------------------	----------------------	---------------------

### WD-40® BIG BLAST®

ITEM #: 49009	NET WEIGHT: 18 OZ.	CASE ORDER #: 490095	CASE UNITS: 6/CASE
---------------	--------------------	----------------------	--------------------

### WD-40® INDUSTRIAL SIZE

ITEM #: 49008	NET WEIGHT: 16 OZ.	CASE ORDER #: 490088	CASE UNITS: 12/CASE
---------------	--------------------	----------------------	---------------------

### WD-40® TRIGGER PRO®

ITEM #: 49010	NET WEIGHT: 20 OZ.	CASE ORDER #: 490108	CASE UNITS: 6/CASE
---------------	--------------------	----------------------	--------------------

### WD-40® GALLON

ITEM #: 49011	NET WEIGHT: 1 GAL.	CASE ORDER #: 490118	CASE UNITS: 4/CASE
---------------	--------------------	----------------------	--------------------

### WD-40® 5-GALLON

ITEM #: 49012	NET WEIGHT: 5 GAL.
---------------	--------------------

### WD-40® 55-GALLON

ITEM #: 49013	NET WEIGHT: 55 GAL.
---------------	---------------------

### WD-40® SPRAY APPLICATOR

ITEM #: 10000	CASE ORDER #: 10100	CASE UNITS: 4/CASE
---------------	---------------------	--------------------



...AND THAT'S  
NOT ALL!

Check out some of WD-40 Company's other great products that are made tough enough for your work.

No matter your job need, WD-40 Company has a product to make your day easier—and help protect your equipment and the bottom line.



3-IN-ONE®

3-IN-ONE® MULTI-PURPOSE OIL

ITEM #: 10035	NET WEIGHT: 3 OZ.
CASE ORDER #: 10135	CASE UNITS: 24/CASE

3-IN-ONE® MULTI-PURPOSE OIL

ITEM #: 10038	NET WEIGHT: 8 OZ.
CASE ORDER #: 10138	CASE UNITS: 12/CASE

3-IN-ONE® GARAGE DOOR LUBE

ITEM #: 10058	NET WEIGHT: 11 OZ.
CASE ORDER #: 100581	CASE UNITS: 6/CASE

3-IN-ONE® LOCK DRY LUBE

ITEM #: 12007	NET WEIGHT: 2.5 OZ.
CASE ORDER #: 120077	CASE UNITS: 12/CASE

3-IN-ONE® ALL-TEMP SILICONE DRIP OIL

ITEM #: 12000	NET WEIGHT: 4 OZ.
CASE ORDER #: 120008	CASE UNITS: 12/CASE

3-IN-ONE® FAST-ACTING PENETRANT DRIP OIL

ITEM #: 12001	NET WEIGHT: 4 OZ.
CASE ORDER #: 120015	CASE UNITS: 12/CASE

3-IN-ONE® DRY-TO-TOUCH LUBE DRIP OIL

ITEM #: 12002	NET WEIGHT: 4 OZ.
CASE ORDER #: 120022	CASE UNITS: 12/CASE

3-IN-ONE® MULTI-PURPOSE PTFE LUBE DRIP OIL

ITEM #: 12003	NET WEIGHT: 4 OZ.
CASE ORDER #: 120039	CASE UNITS: 12/CASE

3-IN-ONE® PROFESSIONAL-GRADE PNEUMATIC TOOL DRIP OIL

ITEM #: 12004	NET WEIGHT: 4 OZ.
CASE ORDER #: 120046	CASE UNITS: 12/CASE

3-IN-ONE® LONG-LASTING MOTOR OIL (SAE 20)

ITEM #: 10045	NET WEIGHT: 3 OZ.
CASE ORDER #: 101456	CASE UNITS: 24/CASE

3-IN-ONE® MULTI-PURPOSE OIL LOCKING SPOUT

ITEM #: 10070	NET WEIGHT: 4 OZ.
CASE ORDER #: 100703	CASE UNITS: 12/CASE



2000 FLUSHES® CHLORINE AUTOMATIC TOILET BOWL CLEANER

ITEM #: 29007	NET WEIGHT: 1.25 OZ.
CASE ORDER #: 290071	CASE UNITS: 12/CASE

2000 FLUSHES® CHLORINE AUTOMATIC TOILET BOWL CLEANER TWIN PACK

ITEM #: 29008	NET WEIGHT: 2.5 OZ.
CASE ORDER #: 290088	CASE UNITS: 6/CASE

2000 FLUSHES® BLUE PLUS BLEACH

ITEM #: 20801	NET WEIGHT: 3.5 OZ.
CASE ORDER #: 208017	CASE UNITS: 12/CASE

2000 FLUSHES® BLUE PLUS BLEACH TWIN PACK

ITEM #: 20808	NET WEIGHT: 7 OZ.
CASE ORDER #: 208082	CASE UNITS: 6/CASE

2000 FLUSHES® BLUE PLUS DETERGENTS  
AUTOMATIC TOILET BOWL CLEANER

ITEM #: 20102	NET WEIGHT: 3.5 OZ.
CASE ORDER #: 201020	CASE UNITS: 12/CASE



SPOT SHOT® PROFESSIONAL INSTANT CARPET STAIN REMOVER

ITEM #: 00993	NET WEIGHT: 18 OZ.
CASE ORDER #: 009934	CASE UNITS: 12/CASE

SPOT SHOT® PROFESSIONAL INSTANT CARPET STAIN REMOVER  
TRIGGER SPRAY

ITEM #: 00972	NET WEIGHT: 32 OZ.
CASE ORDER #: 009729	CASE UNITS: 12/CASE

SPOT SHOT® PET INSTANT CARPET STAIN & ODOR ELIMINATOR  
(NON-TOXIC)

ITEM #: 00920	NET WEIGHT: 14 OZ.
CASE ORDER #: 009208	CASE UNITS: 6/CASE



LAVA® BAR SOAP

ITEM #: 10085	NET WEIGHT: 5.75 OZ.
CASE ORDER #: 10185	CASE UNITS: 24/CASE

LAVA® BAR SOAP TWIN

ITEM #: 10086	NET WEIGHT: 5.75 OZ.
CASE ORDER #: 10186	CASE UNITS: 12/CASE





[wd40.com](http://wd40.com)

WD-40 Company Customer Relations

1-888-324-7596